

## USER MAINTENANCE

Your waver is virtually maintenance free. No lubrication is needed. If cleaning becomes necessary, disconnect the waver from the power source, allow it to cool and wipe exterior with a cloth. If any abnormal condition occurs, unplug the waver, allow it to cool and return it for repair to an authorized service center only. No repairs should be attempted by the consumer.

### CAUTION

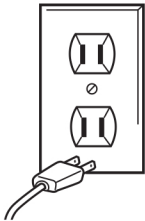
NEVER allow the power supply cord to be pulled, twisted, or severely bent. Never wrap the cord tightly around the appliance. Damage will occur at the high flex point of entry into the appliance, causing it to rupture and short circuit. Inspect the cord frequently for damage. Stop use immediately if damage is visible or if unit stops or operates intermittently.

### STORAGE

When not in use, your appliance is easy to store. Allow appliance to cool, then simply store out of reach of children in a safe, dry location. Do not jerk or strain cord at plug connections. Do not wrap the line cord around the appliance. Allow the cord to hang or lie loose and straight at the point of entry into the appliance.

**WARNING:  
IF YOU THINK  
THE POWER IS OFF  
WHEN THE SWITCH  
IS OFF,  
YOU'RE WRONG.**

**KEEP AWAY FROM WATER**



Everyone knows that electricity and water are a dangerous combination. But did you know that an electric appliance is still electrically live even if the switch is off? If the plug is in, the power is on. So when you are not using your appliances, keep them unplugged.

**ALWAYS UNPLUG  
SMALL APPLIANCES**

## IMPORTANT SAFETY INSTRUCTIONS

When using electrical appliances, especially when children are present, basic safety precautions should always be taken, including the following:

### READ ALL INSTRUCTIONS BEFORE USING KEEP AWAY FROM WATER

**DANGER** — Any appliance is electrically live even when the switch is off. To reduce the risk of death by electric shock:

1. **Always unplug appliance immediately after using.**
2. Do not use while bathing or in the shower.
3. Do not place or store appliance where it can fall or be pulled into a tub or sink.
4. Do not place in or drop into water or other liquids.
5. If an appliance falls into water, unplug it immediately. **Do not reach into the water.**

**WARNING** — To reduce the risk of burns, electrocution, fire, or injury to persons:

1. **This appliance should never be left unattended when plugged in.**
2. This appliance should not be used by, or near children or individuals with certain disabilities.

3. Use this appliance only for its intended use, as described in this manual. Do not use attachments not recommended by the manufacturer.

4. **Never operate this appliance if it has a damaged cord or plug, if it is not working properly or if it has been dropped or damaged or dropped into water. Return the appliance to an authorized service center for examination and repair.**

5. **Keep the cord away from heated surfaces. Do not pull, twist, or wrap line cord around appliance.**

6. Never use while sleeping or drowsy.

7. Never drop or insert any object into any opening or hose.

8. Do not use outdoors or operate where aerosol (spray) products are being used or where oxygen is being administered.

9. Unit is hot when in use. Do not let heated surfaces touch eyes or skin.

10. **Do not place the heated unit directly on any surface while it is hot or plugged in. Use counter rest provided.**

11. Never block the air openings of the appliance or place on a soft surface, such as a bed or couch, where the air openings may be blocked. Keep the air openings free of hair, lint and other debris.

12. Do not use an extension cord with this appliance.

13. Do not touch hot surfaces of the appliance. Use handles or knobs.

14. Do not attempt to touch the housing of your appliance near the barrel, as it is hot when in use.

15. Do not operate with a voltage converter.

16. This appliance is not a toy. Keep away from children.

17. Before plugging in, read the information about dual voltage in the Operating Instructions section below.

## SAVE THESE INSTRUCTIONS OPERATING INSTRUCTIONS

Use on Alternating Current (50/60 hertz) only. This unit is designed to be operated at 120/240V AC.

This has a polarized plug (one blade is wider than the other). As a safety feature, this plug will fit in a polarized outlet only one way. If the plug does not fit fully in the outlet, reverse the plug. If it still does not fit, contact a qualified electrician. Do not attempt to defeat this safety feature.

**NOTE: DO NOT USE THIS STYLING APPLIANCE ON HAIR EXTENSIONS.**

### DUAL VOLTAGE

This appliance will automatically adjust to the proper voltage. Use an adapter plug with correct configuration prior to use in outlet.

### TOURMALINE CERAMIC EASY-GLIDE BARRELS

The barrels of your new waver have a tourmaline ceramic easy-glide surface, the newest technology. This means it's not only simpler to clean off styling product residue, etc., after each use, but you'll also find that hair glides easily over the surface of the barrel as you're using the device. The tourmaline ceramic surface helps smooth down flyaways, too. It evenly distributes heat so that the style you create has a salon-perfect, silky smooth, shiny finish.

The new tourmaline ceramic technology is a pleasure to work with and makes styling your hair easier and the results more professional.

### GETTING STARTED

#### SWITCH ACTIVATION CONTROL

**IMPORTANT!** This appliance features delayed activation control. Immediately after turning the appliance on, you are able to adjust the temperature. After 5 seconds of the appliance being turned on, the control buttons will automatically lock. To adjust the controls, hold down the heat control buttons "+" or "-" button for 1-2 seconds. This will deactivate the lock mode and allow the settings to be changed. To turn off the appliance while in lock mode, hold down the I/O button until the appliance switches off.

Plug the waver cord into any household outlet (120/240V). Press and hold the I/O button for approximately 1 second to turn the appliance on. The unit will heat up very quickly. Press "+" or "-" button to select your desired temperature. Once the temperature has stopped blinking on the LED, the unit is ready to use. To turn unit off, press and hold the Power I/O button again until light goes off.

### LIMITED TWO YEAR WARRANTY (U.S. AND CANADA ONLY)

Conair will repair or replace (at our option) your unit free of charge for 24 months from the date of purchase if the appliance is defective in workmanship or materials.

To obtain service under this warranty, return the defective product to the service centre listed below, together with your purchase receipt. In the absence of a purchase receipt, the warranty period shall be 24 months from the date of manufacture.

**ANY IMPLIED WARRANTIES, OBLIGATIONS, OR LIABILITIES, INCLUDING BUT NOT LIMITED TO THE IMPLIED WARRANTY OF MERCHANTABILITY AND FITNESS FOR A PARTICULAR PURPOSE, SHALL BE LIMITED IN DURATION TO THE 24 MONTH DURATION OF THIS WRITTEN, LIMITED WARRANTY.**

**IN NO EVENT SHALL CONAIR BE LIABLE FOR ANY SPECIAL, INCIDENTAL, OR CONSEQUENTIAL DAMAGES FOR BREACH OF THIS OR ANY OTHER WARRANTY, EXPRESS OR IMPLIED, WHATSOEVER.**

This warranty gives you specific legal rights, and you may also have other rights, which vary from province to province.

### SERVICE CENTRE

CONAIR CONSUMER PRODUCTS ULC

100 Conair Parkway

Woodbridge, ON L4H 0L2

1-855-926-6247

www.conaircanada.ca

Consumer Call Centre E-mail :

Consumer\_Canada@Conair.com

Printed in China

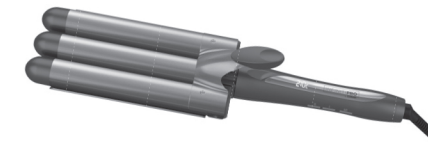
©2021 CONAIR CONSUMER PRODUCTS ULC

21CN077947

IB-17214

INFINITI **PRO**  
BY CONAIR

**TRIPLE BARREL  
WAVER**



### Have a Question?

*Please do not return this product to the retailer.*

### Call Us First!

**Our customer service and product experts are ready to answer ALL your questions.**

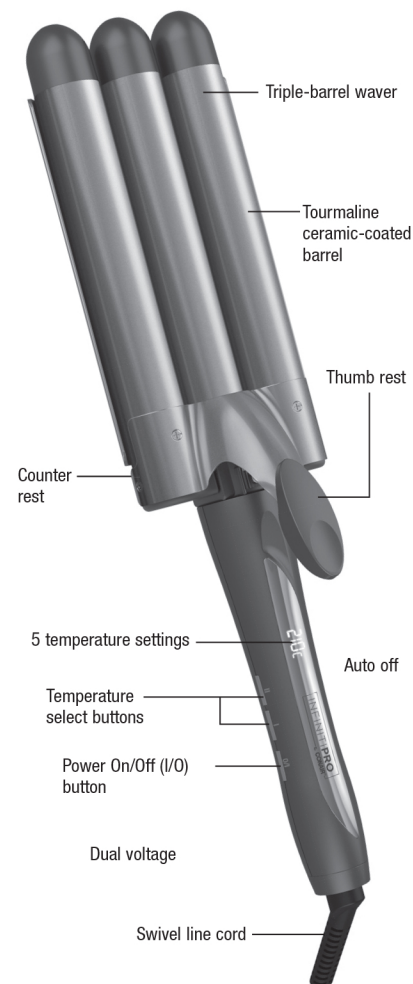
**Please call our TOLL-FREE customer service number at: 1-855-926-6247 or visit us online at www.conaircanada.ca**

### Instruction & Styling Guide

For your safety and continued enjoyment of this product, always read the instruction book carefully before using.

**Model S9 - All Versions**

### GET TO KNOW YOUR WAVER



### TO CREATE DEEP WAVES

Hair should be clean and completely dry before using the styling iron. For best results, use a light styling product before blow-drying hair.

1. Start with a section of hair that is 2 inches wide and place hair between barrels.

2. Starting at the scalp, lightly clamp, moving toward the ends of your hair.

3. Hold the styler 5–10 seconds prior to releasing and sliding down. For gentle, soft waves use larger pieces of hair. For more defined waves, use smaller sections of hair.

4. This process requires some overlapping to create waves in the hair. Repeat the process until you have achieved the look you desire. Some experience is necessary when learning to use this styler. After using the styler several times, you will learn the ideal way to style your hair easily.

## IMPORTANT

**Never leave your appliance on and unattended. However, should you fail to turn the waver off, it will shut itself off automatically within 60 minutes.**